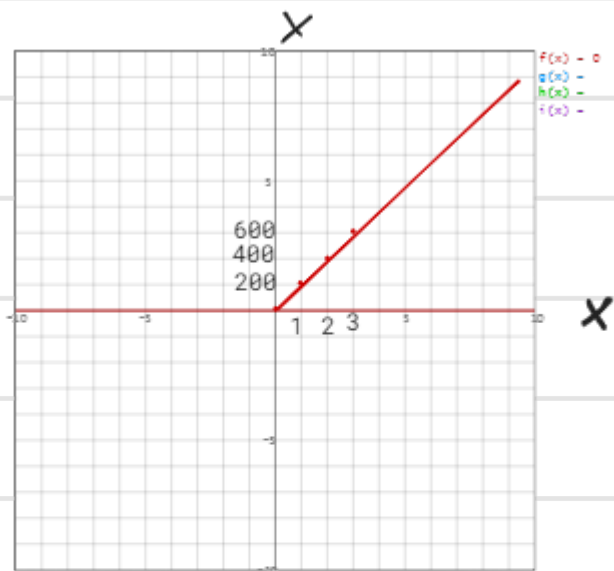
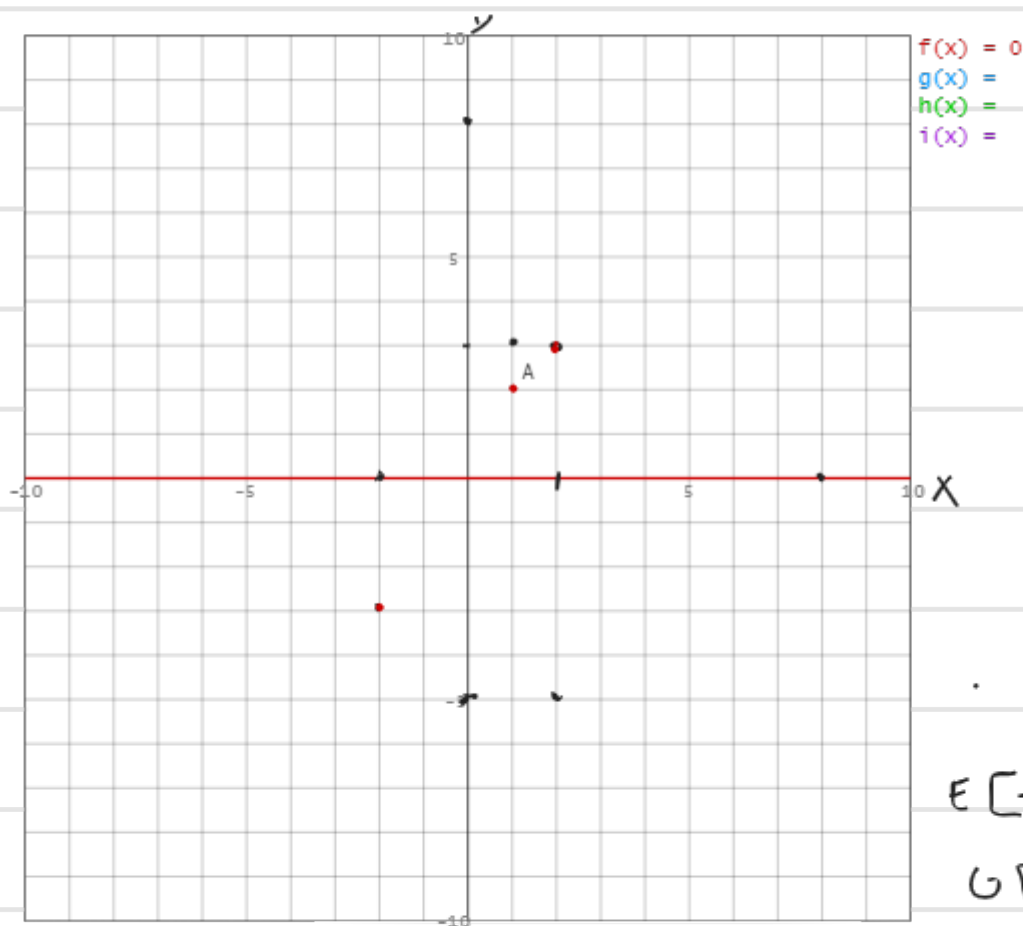


# LINEÁRNÍ FUNKCE

$$y = ax + b$$



$$y = 200 \cdot x + 5$$



x y

$$A [1; 2]$$

$$B [2; 3]$$

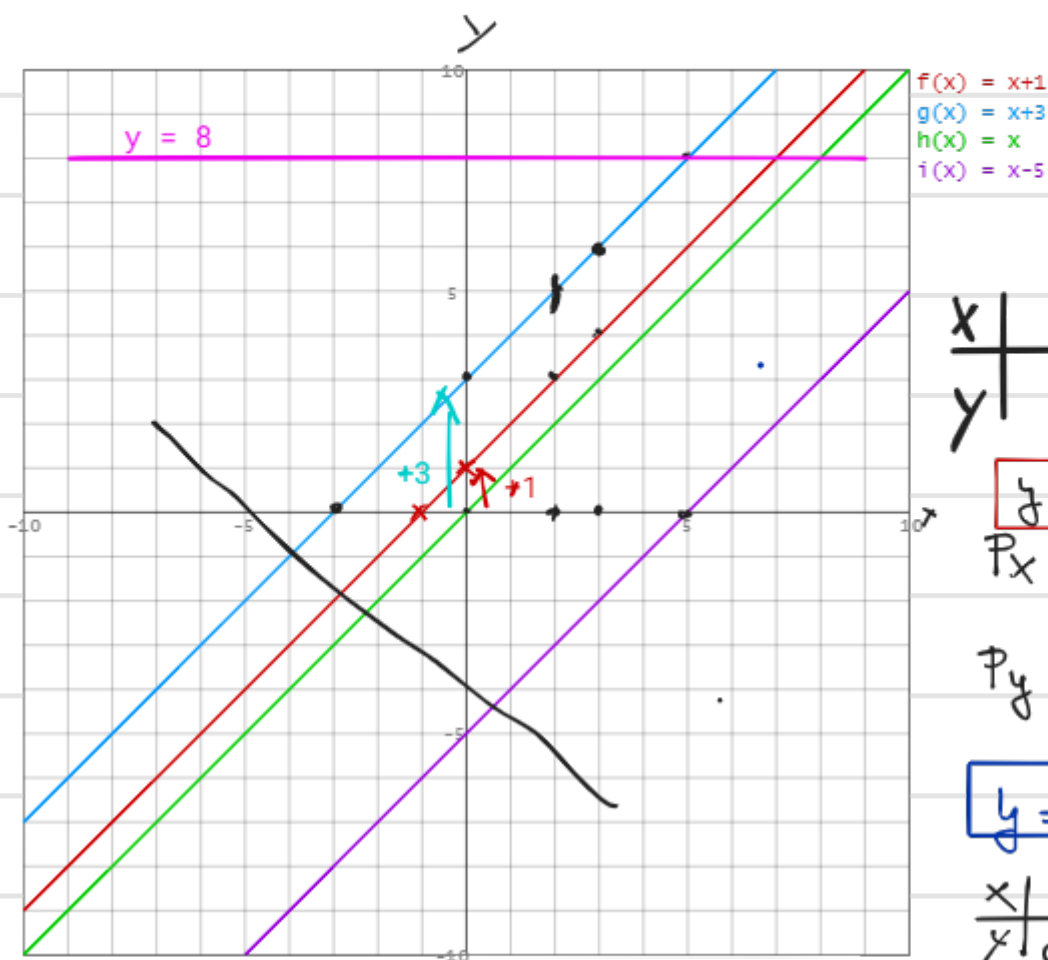
$$C [-2; -3]$$

$$D [0; -5]$$

$$E [-2; 0] \quad F [2; -5]$$

$$G [0; 8]$$

$$y = x + 1$$



$x$	2	3
$y$	3	4

$$y = x + 1$$

$$P_x: [-1; 0] \quad 0 = x + 1$$

$$P_y: [0; 1] \quad y = 0 + 1$$

$$y = x + 3$$

$x$	3	5	2	3	0
$y$	6	8	5	6	3

$$y = ax + b$$

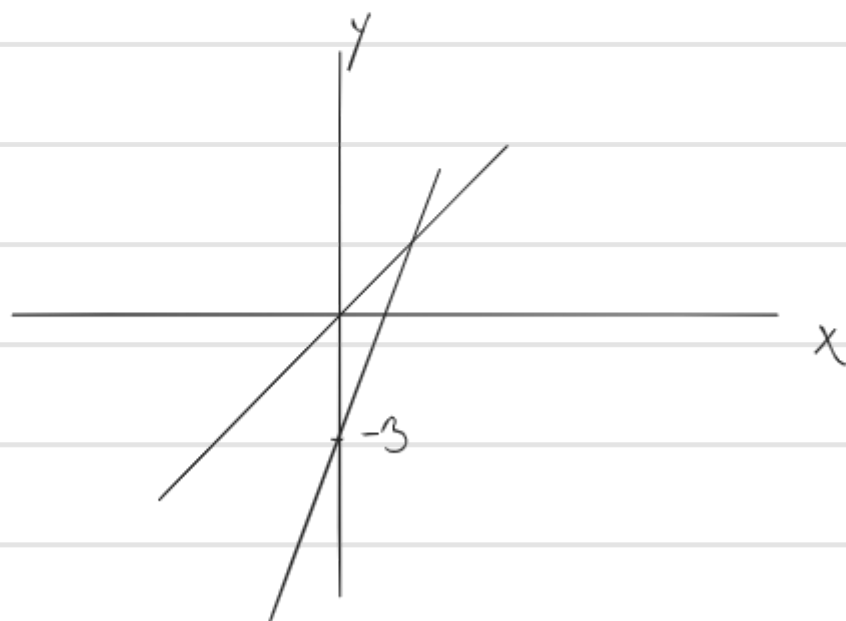
čím je  $a$  vyšší tím je sklon strmější

$a > 0$  rostoucí

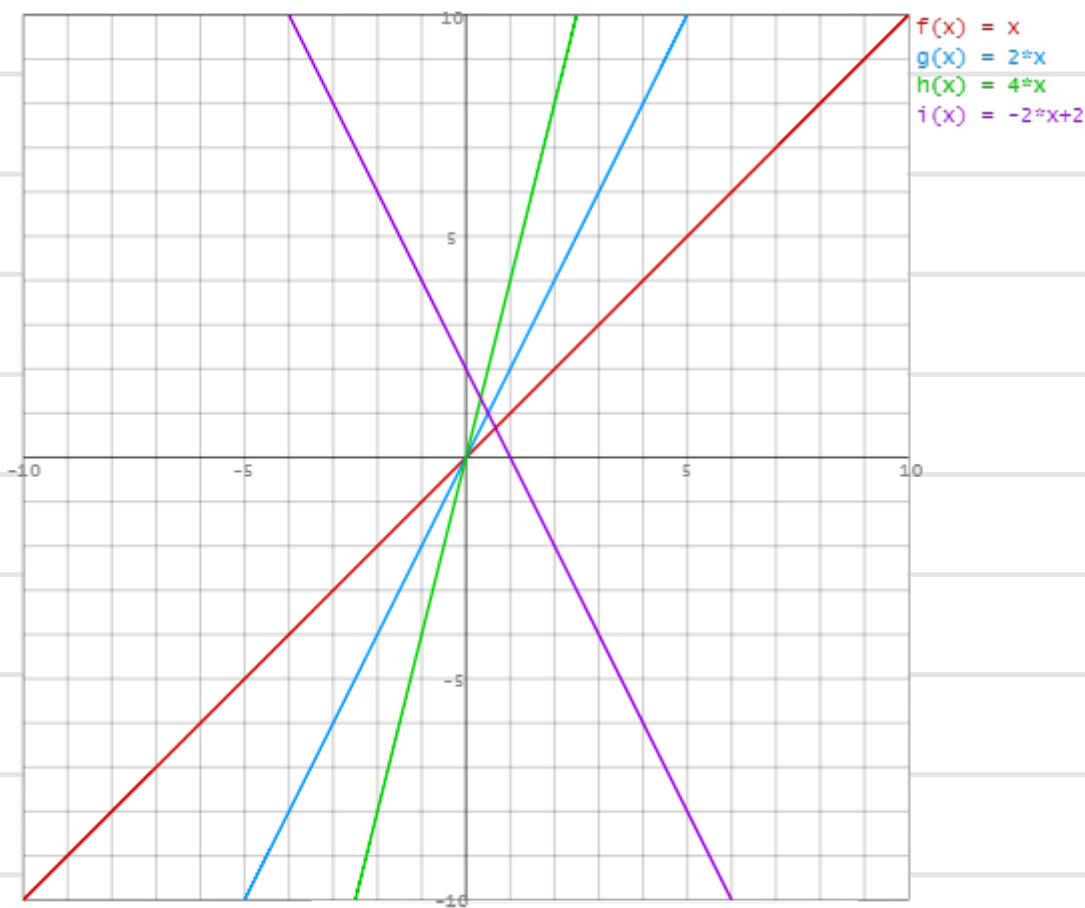
$a < 0$  klesající

$a = 0$  konstantní

$b$  = posun nahoru a dolů



$$y = 2x - 3$$



$$A \begin{matrix} x & y \\ [1; 3] \end{matrix} \quad B \begin{matrix} x & y \\ [3; 7] \end{matrix}$$

$$y = ax + b$$

$$\begin{array}{rcl} 3 & = & a + b \\ 7 & = & 3a + b \end{array} \quad \left[ \begin{array}{l} \leftarrow \\ - \end{array} \right]$$

$$4 = 2a$$

$$a = 2 \quad b = 1$$

$$y = 2x + 1$$

$$A \begin{bmatrix} x & y \\ 1 & -1 \end{bmatrix}$$

$$B \begin{bmatrix} 5 & -13 \end{bmatrix}$$

$$y = ax + b$$

$$y = ax + b$$

$$-1 = a + b$$

$$-13 = 5a + b$$

$$12 = 4a$$

$$a = -3$$

$$-1 = a + b$$

$$-1 = -3 + b$$

$$-1 + 3 = b$$

$$y = -3x + 2$$

$$b = 2$$